

IoT isn't slowing down and there's an increase in the development of Smart Cities.

At the time this was written, Bill Gates announced his plans to develop Belmont, a smart city in Arizona, just west of Phoenix.

“Belmont will create a forward-thinking community with a communication and infrastructure spine that embraces cutting-edge technology, designed around high-speed digital networks, data centers, new manufacturing technologies and distribution models, autonomous vehicles and autonomous logistics hubs.”

If you've read our articles on Smart Farming and Smart Waste Management, you can see the potential to make jobs more effective, save resources, and connect in a way that makes everyday life easier. We have spent years developing and testing our sensors for use with automobile detection. Along with sensors used in smart waste management and precision agriculture, we're being used in smart parking solutions across the world.

What is Smart Parking?

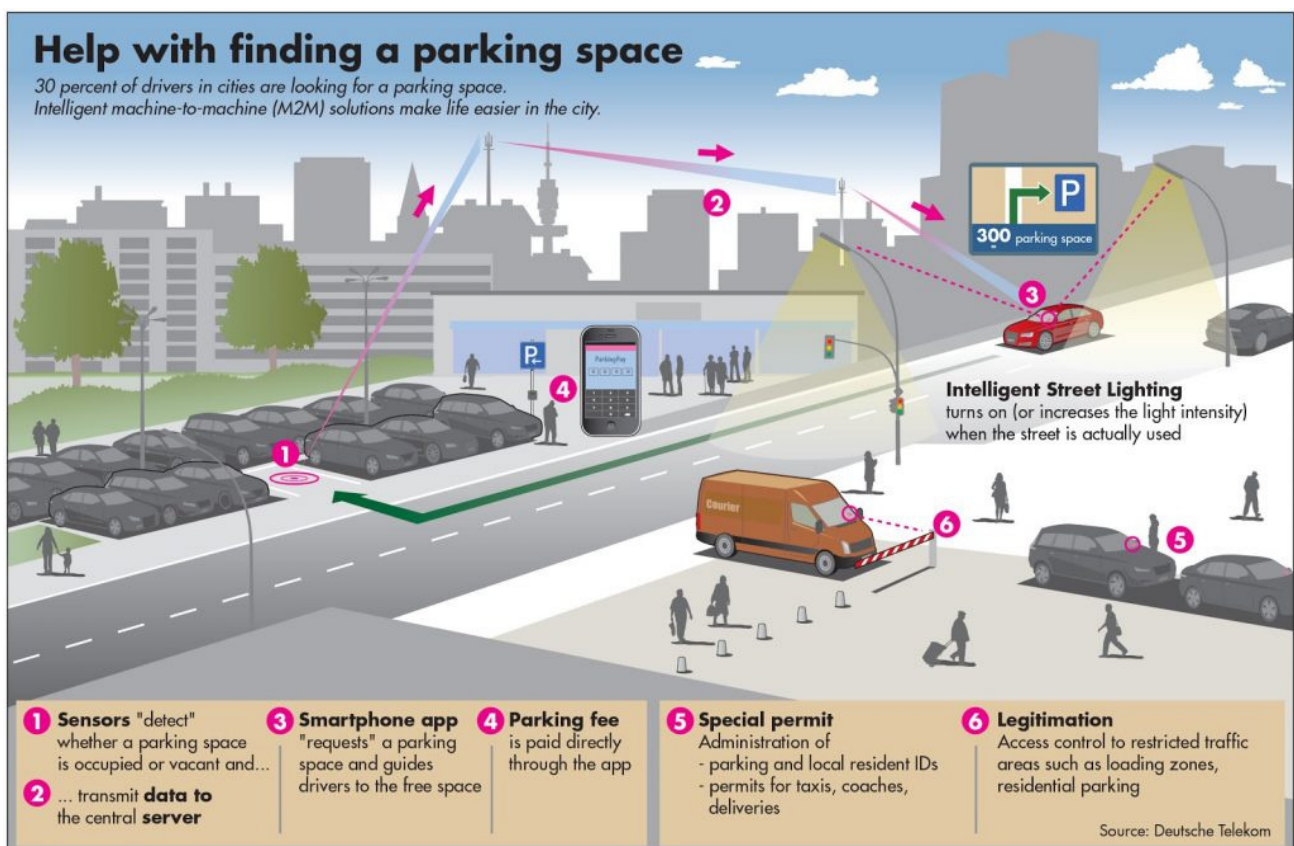
Smart Parking is a parking strategy that combines technology and human innovation in an effort to use as few resources as possible—like fuel, time and space—to achieve faster, easier and denser parking of vehicles for the majority of the time they remain idle. – Parksmart

How Parking Sensors Work

Information about parking spaces in a certain area is collected and processed in real-time by sensors to place vehicles in those available parking spaces. Like smart waste management, it allows the optimization of workforce management and makes it easier for drivers to park.

Parking meters are also developed with sensors. They automatically expire what time is left on a meter when the vehicle departs the stall. It forces the next driver to have to put more money in the meter, no time is rolled over.

Take a look at this infographic and imagine the possibilities for application in hospital parking, parking in urban areas, shopping malls or sports venues.



For these types of applications, we offer two options for smart parking.

MB8450 - USB - Car Detection Sensor

We designed the Car Detection Sensor as a weather resistant, low-cost USB option to detect the side of a vehicle in a drive-through. Multiple sensors can be used together in one system with little effect from sensor to sensor interference.

The main applications this sensor is used in include:

- Drive-thru ATMs
- Drive-thrus
- Automated displays and advertising
- Proximity zone detection
- Kiosks and booths
- Multi-sensor arrays
- Car park signs
- Smart parking meters
- Parked car detection

ParkSonar-EZ

Our ParkSonar-EZ line is mainly used in indoor parking or covered environments. It's designed to be in a protected indoor application. It's a low cost, high-performance sensor which also allows the integration of several sensors into one system with little to no effect from sensor interference.

The main applications this sensor is used in include:

- Parked car detection
- Proximity zone detection
- Sheltered drive-thrus (fast food restaurants, banks, etc.)
- Non-condensing environments only
- Designed for protected indoor environments.

Companies like Barcelona based Parkimeter, rely on accurate information when booking parking spaces for customers. An accurate count of spaces allows Parkimeter to book parking spaces via an online booking system. All of the information is collected by sensors and a database to ensure there is no double booking and your space is available when you show up to park

With the trend of mobile devices and IoT, staying connected is more important than ever. Traffic congestion can be reduced as well as pollution. Management costs can be cut as automation is introduced. Real-time data can be leveraged to analyze trends and make adjustments to improve driver experience.

The right parking space detection sensor can make a great impact.

If you have a parking project or an application where a vehicle needs to be detected, contact us @ sales@maxbotix.com to discuss sensor options for your application. A letterhead is the heading at the top of a sheet of letter paper (stationery). That heading usually consists of a name and an address, and a logo or corporate design, and sometimes a background pattern.