



ITT

Customer Support Locations

CHINA
 Tuopandun Industrial Area, Jinda Cheng,
 Xiner Village, Shajing Town,
 Baoan District, Shenzhen City,
 Guangdong, China 518125
 phone: +86.755.2726.7238
 fax: +86.755.2726.7515

GERMANY
 Cannonstrasse 1
 Weinstadt, 71384
 phone: +49.7151.699.0
 fax: +49.7151.699.217

FRANCE
 15, Boulevard Robert Thiboust
 Serris, France 77700
 phone: +33.1.60.04.93.93
 fax: +33.1.60.04.93.90

HONG KONG
 Units 2405-6, 24/F, ING Tower
 308 Des Voeux Road
 Central Hong Kong
 phone: +852.2732.2720
 fax: +852.2732.2919

ITALY
 Corso Europa 41/43
 Lainate (MI), Italy 20020
 phone: +39.02938721
 fax: +39.0293872300

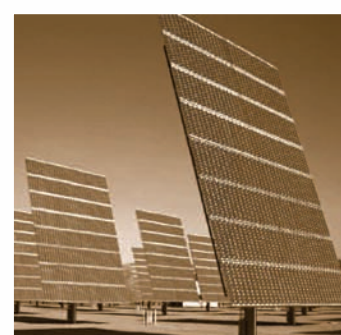
JAPAN
 11-3, 5 Chome, Hibarigaoka, Zama-shi
 Kanagawa, Japan 228-0003
 phone: +81.462.57.2010
 fax: +82.462.57.1680

UK
 Jays Close, Viabes Estate
 Basingstoke, RG22 4BA
 phone: +44.1256.311200
 fax: +44.1256.323356

USA
 666 East Dyer Road
 Santa Ana, CA 92705
 toll free: 1.800.854.3028
 phone: +1.714.557.4700
 fax: +1.714.628.2142

www.ittcannon.com

©2009 ITT Corporation. „Engineered for life“ and „Cannon“ are registered trademarks of ITT Corporation. Specification and other data are based on information available at the time of printing, and are subject to change without notice.



Specify your power connector

Begin from the master product line overview in this brochure.

Step 1: Noting your specific application, pick the appropriate market segment. Conversely, identify your required current rating.

Step 2: Verify any required standards or specifications.

Step 3: Identify the appropriate Cannon, VEAM, and / or BIW product lines.

Step 4: Review the listed, top-level product line performance information against your required application.

Step 5.1: Identify appropriate configuration in product line catalog, check www.ittcannon.com.
or
Step 5.2: Contact your local sales office* or channel representative* for additional help.

*For a complete listing of ITT Sales Locations, Sales Representatives, Sales Representatives, and Distribution Partners, visit the "Global Sales Locator" on www.ittcannon.com.

Contact Technologies



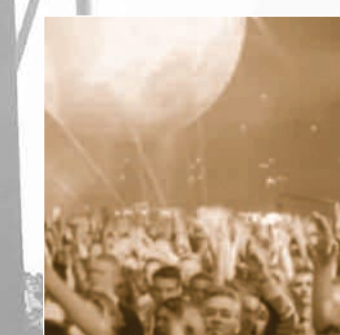
Brand	Cannon	VEAM	Cannon	VEAM	Cannon	Cannon
Contact Design	High Efficiency Power Contact	Powerlock	CGE/VGE	CIR Power	CA-B Power	D-Sub
Military Specification (acc to...)	MIL-C-39029			VG 95234, Mil-C-5015	VG 95234, Mil-C-5015	
Mating Cycles	> 500	> 500	> 500	> 500	> 500	> 500
Contact Material	CDA 145, Tellurium Bearing Copper	Copper Alloy	Copper Alloy	Copper Alloy	Copper Alloy	Copper Alloy
Contact Finish	Ag and/or Au over Nickel	Ag	Ag	Ag	Ag	Ag, Au, Sn

AWG	Available Contacts Sizes mm ²	Rated Current						
600 MCM	400	1000 A						
450 MCM	300	750 A		x				
350 MCM	240	660 A		x	x			
275 MCM	185	400 A		x				
225 MCM	150/120	350 A		x	x			
4/0	107/100/95	300 A		x	x			
3/0 - 2/0	85/70/67	250 A - 225 A			x			
0	54/50/42/35	200 A - 175 A	x	x	x		x	
2	34/25	150 A						
4 - 6	21/13/10	100 A - 80 A	x		x		x	
8 - 10	8/6	60 A - 40 A	x		x		x	
12 - 14	2/3	30 A - 20 A						x
16 - 18	1,23	22 A - 10 A						
20	0.52 - 0.62	7.5 A						

New Technologies on the "Innovation Horizon"

Aluminium cables & new termination technology

New finger-protected contact system (APHV)



ITT

Interconnect Solutions Cannon, VEAM & BIW

Power Connectors Overview Guide



Engineered for life

www.ittcannon.com

