

SELECTOR GUIDE

Equipment Leakage

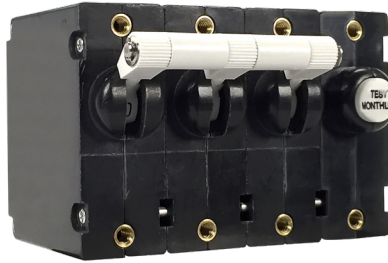
Circuit Interrupters



Selector Guide



PC-Series



PB-Series

Poles	1-poles (1 circuit breaker + 1 ELCI sensor module), 120V, 2-pole (2 circuit breakers + 1 ELCI sensor module), 120/240V, or 120V with neutral break 2-pole (2 circuit breakers + 1 ELCI sensor module), 240VAC, 3-pole 120/240V with neutral break (sensor module has 2 pole width)	1-3 poles, 3rd pole switched neutral
Actuator Style	handle, rocker, flat rocker, push-to-reset	handle, rocker, flat rocker
Leakage Current Trip Level	30mA	30mA
Leakage Current Trip Time	For 30mA leakage trip: ≤ 22.2mA, shall not trip 30mA, shall trip within .10 seconds, complying with UL-1053 & ABYC E11.	For 30mA leakage trip: ≤ 22.2mA, shall not trip 30mA, shall trip within .10 seconds, complying with UL-1053 & ABYC E11.
Max Current & Voltage Ratings	0.10-50A@120/240VAC - 240VAC	0.10-30A@120/240VAC
Max Interrupting Capacity	5,000A	5,000A
Available Circuits	series trip	series trip
Termination	10-32 threaded stud	.250" tabs, 8-32, 10-32, M4,M5 screw with up-turned lugs, 8-32, 10-32, M4,M5 screw, bus type
Mounting Method	front panel	front panel
Operating Temperature	-35° C to +65° C	-35° C to +65° C
Agency Approvals	UL 1053, UL 1500	UL 1053, UL 1500

Authorized Sales Representatives and Distributors

Click on a region of the map below to find your local representatives and distributors or visit www.carlingtech.com/findarep.



About Carling

Founded in 1920, Carling Technologies is a leading manufacturer of electrical and electronic switches and assemblies, circuit breakers, electronic controls, power distribution units, and multiplexed power distribution systems. With six ISO9001 and IATF16949 registered manufacturing facilities and technical sales offices worldwide, Carling Technologies Sales, Service and Engineering teams do much more than manufacture electrical components, they engineer powerful solutions! To learn more about Carling please visit www.carlingtech.com/company-profile.

To view all of Carling's environmental, quality, health & safety certifications please visit www.carlingtech.com/environmental-certifications.